

Viking Star
Viking Sea
Viking Sky
Viking Sun

Viking Orion
Viking Jupiter
Viking Venus
Viking Mars
Viking Neptune

FINCANTIERI
The sea ahead



Viking Star
 Viking Sea
 Viking Sky
 Viking Sun
 Viking Orion
 Viking Jupiter
 Viking Venus
 Viking Mars
 Viking Neptune



_ main facts

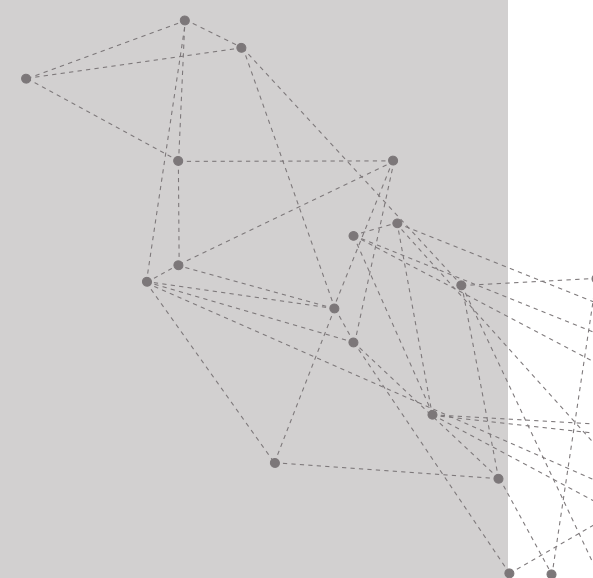
name	delivery	construction
Viking Star	2015	Hull 6236
Viking Sea	2016	Hull 6245
Viking Sky	2017	Hull 6237
Viking Sun	2017	Hull 6246
Viking Orion	2017	Hull 6253
Viking Jupiter	2019	Hull 6254
Viking Venus	2021	Hull 6283
Viking Mars	2022	Hull 6284
Viking Neptune	2022	Hull 6285

_ main characteristics

	Hull 6236	Hull 6245	Hull 6237	Hull 6246	Hull 6253	Hull 6254	Hull 6283	Hull 6284	Hull 6285
Gross tonnage	47,842								
Length overall	228.2								
Beam moulded	28.8								
Design draught	6,45								
Service speed	17								
Max Speed	20								
Classification Society	Lloyd's Register								

MAIN MACHINERIES		
Propulsion Electric Motors	2 x 7250	kW
MAN 9L32/44CR	2 x 5040	kW
MAN 12V32/44CR	2 x 6720	kW
Total installed el. power	23,520	kW

PASSENGER CABINS	
Owner Suite	473
Suites	1
Deluxe	46
Balcony	104
Outside cabins ratio	314
Balcony cabins ratio	100%
CREW CABINS	98,31%
MAX PERSONS ON BOARD	265
	1,443



Head Office

Via Genova, 1 - 34121 Trieste (Italy)
 ph. +39 040 3193111 - fax +39 040 3192305

Merchant Ships

Passeggio S. Andrea, 6/A - 34123 Trieste (Italy)
 ph. +39 040 3193111 - fax +39 040 376969

fincantieri.com

